

Contact: Michal Catari

Phone: 248-910-1754

michal.catari@wolfvre.com



LIST OF DRAWINGS

- 1.0 BASEMENT FLOOR PLAN
- 1.1 MAIN FLOOR PLAN
- 1.2 SECOND FLOOR PLAN
- 1.3 ATTIC FLOOR PLAN
- 2.1 FRONT ELEVATION
- 2.2 RIGHT ELEVATION
- 2.3 REAR ELEVATION
- 2.4 LEFT ELEVATION
- 3.0 BASEMENT FLOOR POINT CLOUD
- 3.1 MAIN FLOOR POINT CLOUD
- 3.2 SECOND FLOOR POINT CLOUD
- 3.3 ATTIC FLOOR POINT CLOUD
- 4.1 SECTION POINT CLOUD

AREA SCHEDULE

Basement Floor Plan	758
Main Floor Plan	983
Second Floor Plan	681
Attic Floor Plan	684
Total Gross Floor Area	3106

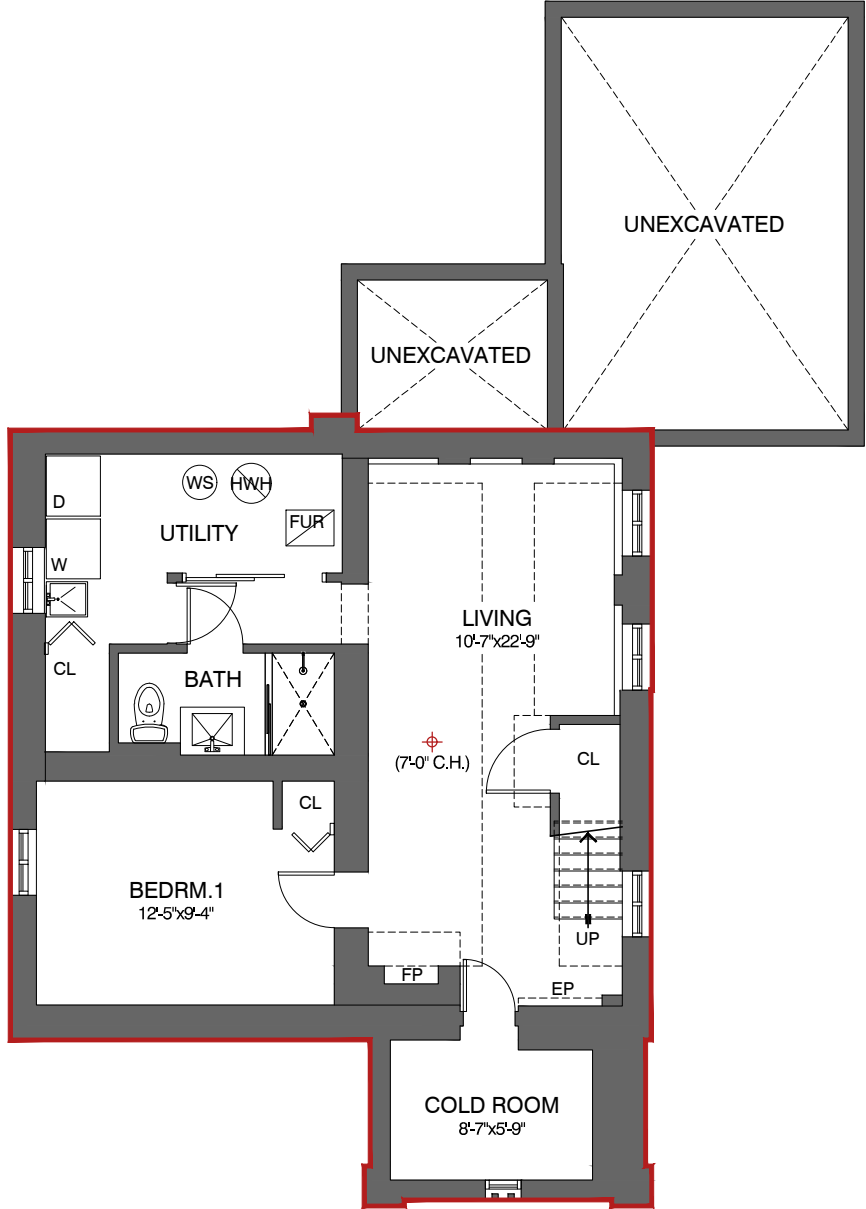
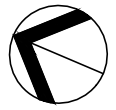
WEB LINKS

MASTER TOUR: [CLICK](#)

EXISTING CONDITION PLUS

SIMEON STREET SAMPLE

Do not scale drawings. Contractors must check and verify all dimensions and report any discrepancies to WOLFVR before proceeding with any work. All documents remain the property of WOLFVR. Unauthorized use, modification, and/or reproduction of these documents is prohibited without written permission. The material contained herein reflects the Consultant's best judgment in light of the information available at the time of preparation. Any use which a third party makes of the documents, or any reliance on or decisions to be made based on them are the responsibility of such third parties. The Consultant accepts no responsibility for damages, if any, suffered by any third party as a result of decisions made or actions based on the documents.

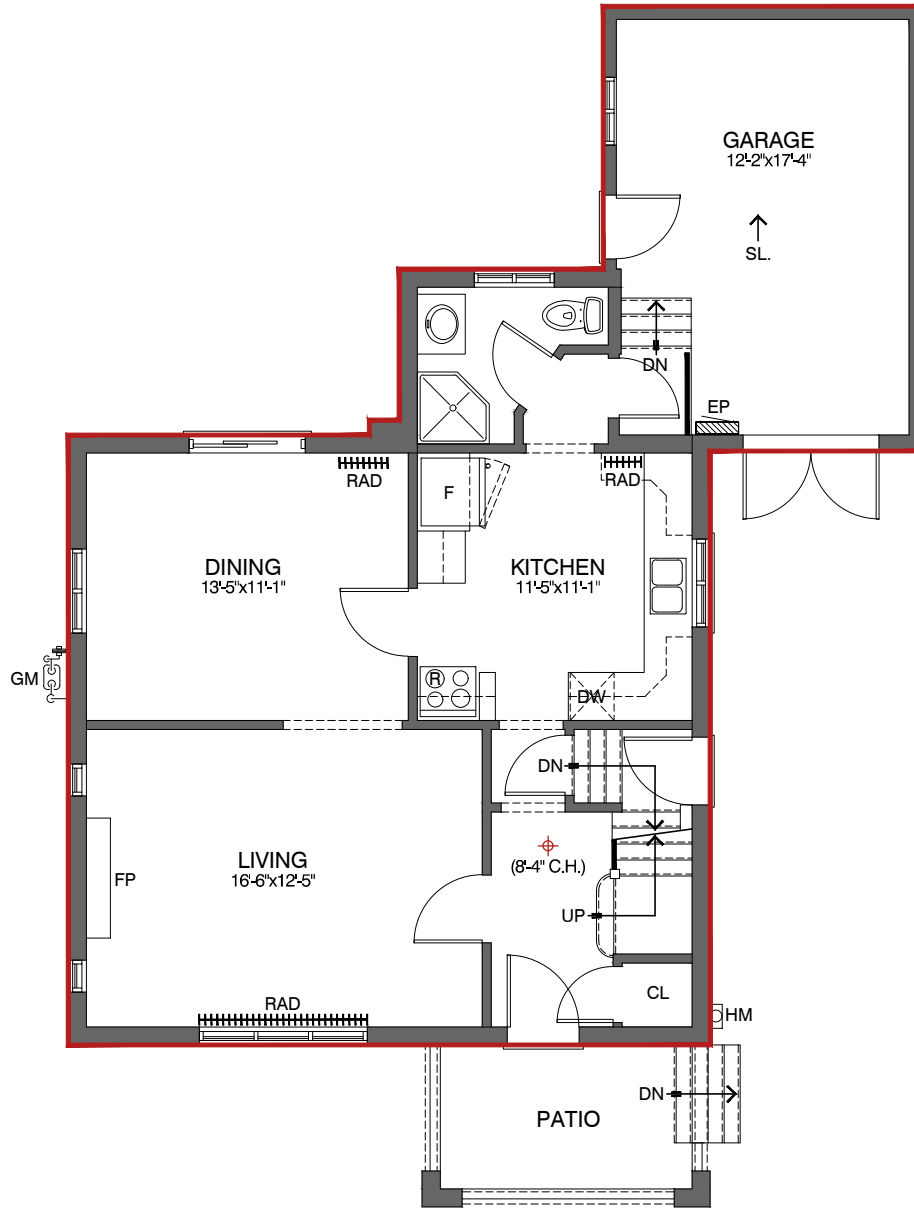
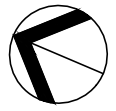


Area Schedule (sq.ft.)

Basement Floor Plan	758
Total Gross Floor Area	3,106

CLICK TO TOUR

Do not scale drawings. Contractors must check and verify all dimensions and report any discrepancies to WOLFVR before proceeding with any work. All documents remain the property of WOLFVR. Unauthorized use, modification, and/or reproduction of these documents is prohibited without written permission. The material contained herein reflects the Consultants' best judgment in light of the information available at the time of preparation. Any use which a third party makes of the documents, or any reliance on or decisions to be made based on them are the responsibility of such third parties. The Consultant accepts no responsibility for damages, if any, suffered by any third party as a result of decisions made or actions based on the documents.

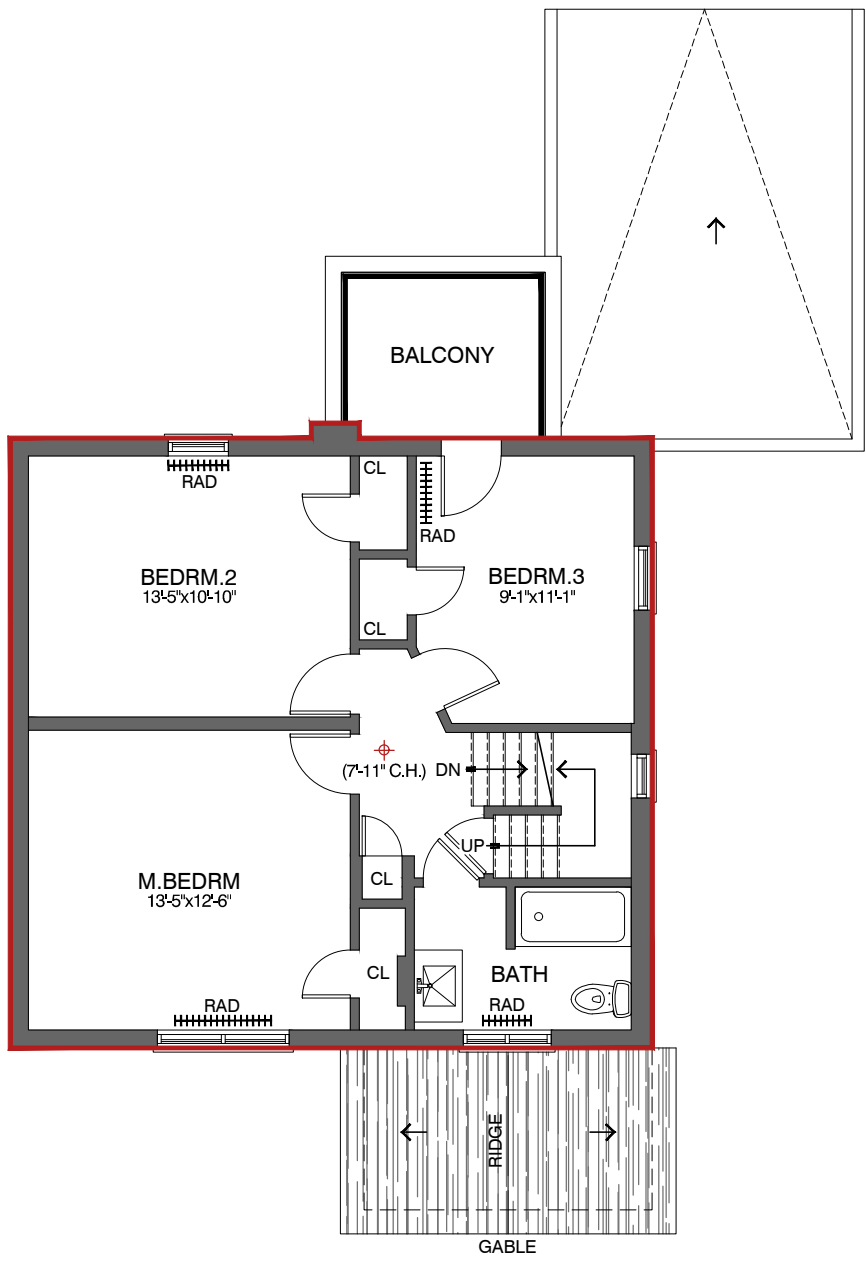
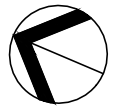


Area Schedule (sq.ft.)

Main Floor Plan	983
Total Gross Floor Area	3,106

[CLICK TO TOUR](#)

Do not scale drawings. Contractors must check and verify all dimensions and report any discrepancies to WOLFVR before proceeding with any work. All documents remain the property of WOLFVR. Unauthorized use, modification, and/or reproduction of these documents is prohibited without written permission. The material contained herein reflects the Consultants best judgement in light of the information available at the time of preparation. Any use which a third party makes of the documents, or any reliance on or decisions to be made based on them are the responsibility of such third parties. The Consultant accepts no responsibility for damages, if any, suffered by any third party as a result of decisions made or actions based on the documents.

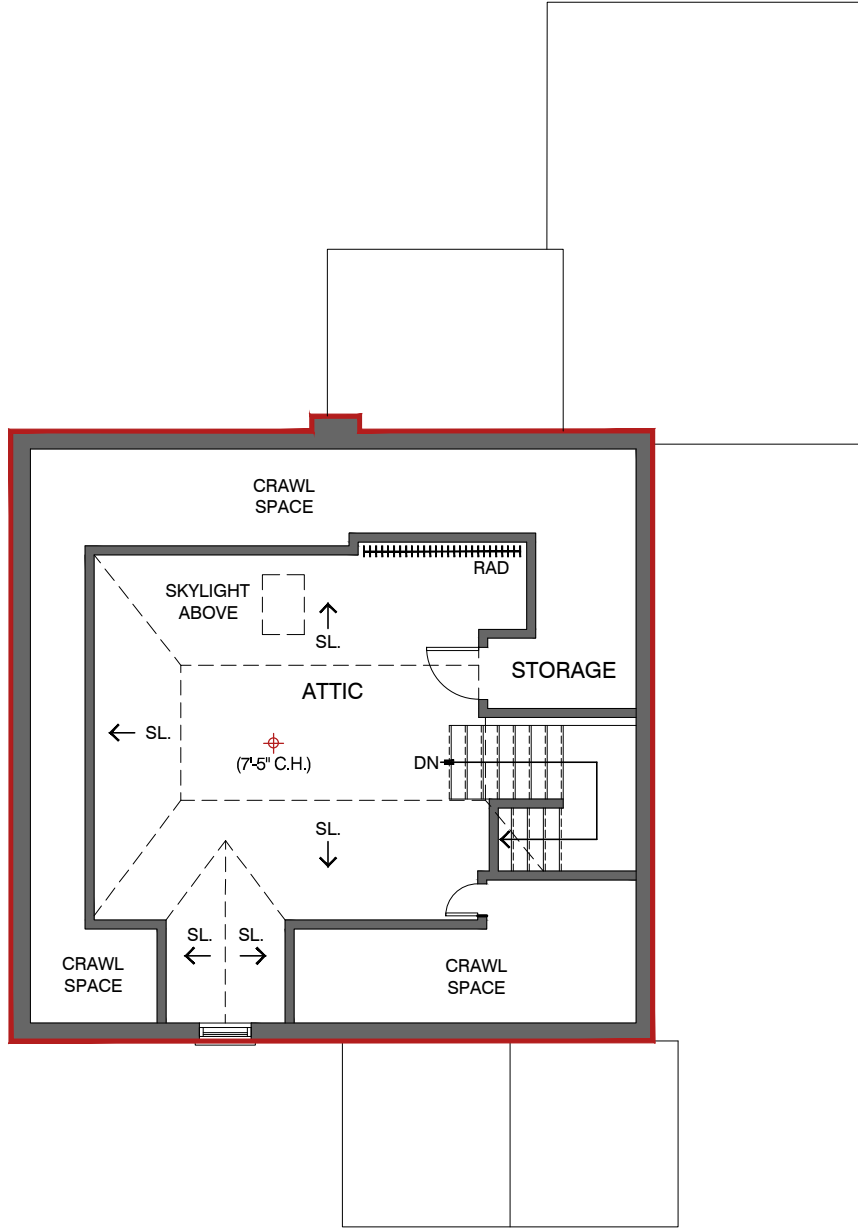


Area Schedule (sq.ft.)

Second Floor Plan	681
Total Gross Floor Area	3,106

CLICK TO TOUR

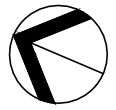
Do not scale drawings. Contractors must check and verify all dimensions and report any discrepancies to WOLFVR before proceeding with any work. All documents remain the property of WOLFVR. Unauthorized use, modification, and/or reproduction of these documents is prohibited without written permission. The material contained herein reflects the Consultants best judgement in light of the information available at the time of preparation. Any use which a third party makes of the documents, or any reliance on or decisions to be made based on them are the responsibility of such third parties. The Consultant accepts no responsibility for damages, if any, suffered by any third party as a result of decisions made or actions based on the documents.



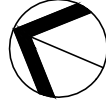
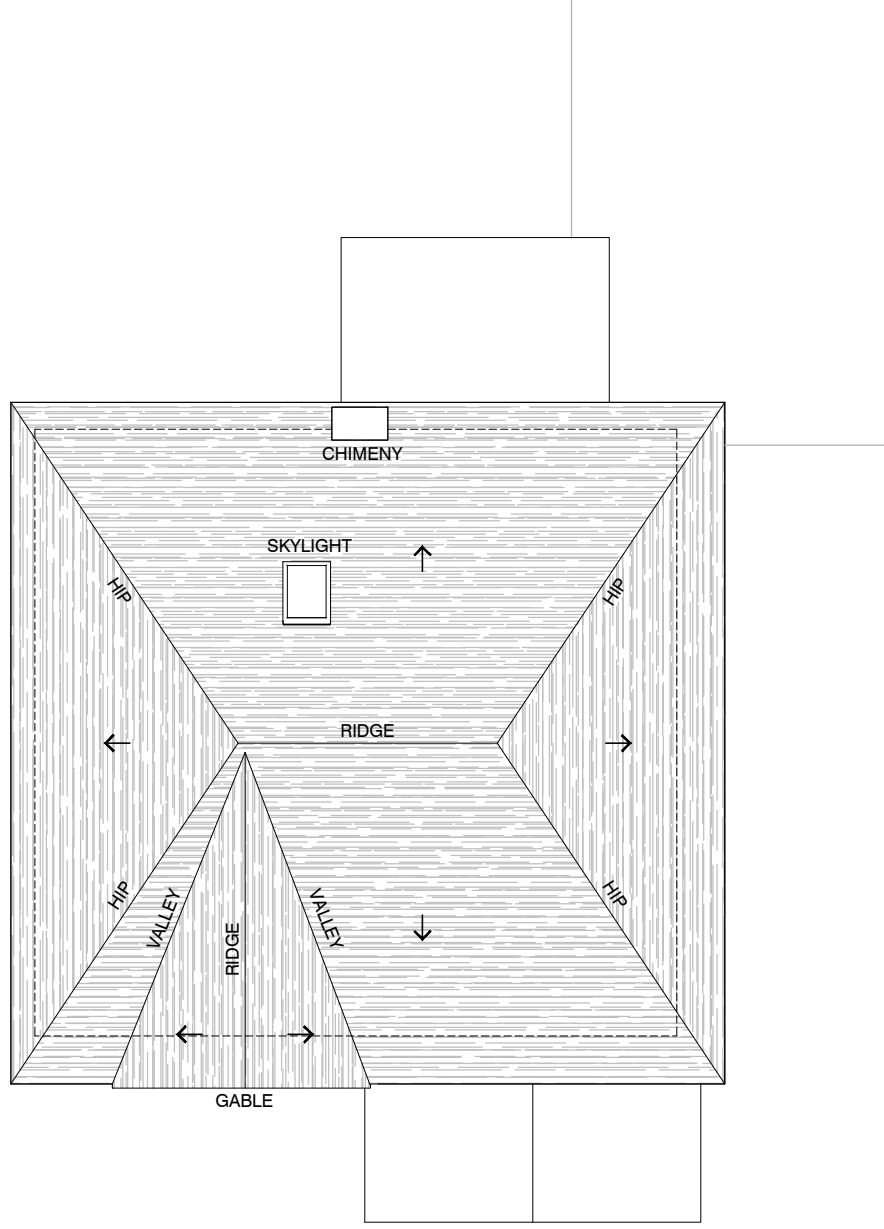
Area Schedule (sq.ft.)

Attic Floor Plan	684
Total Gross Floor Area	3,106

[CLICK TO TOUR](#)



Do not scale drawings. Contractors must check and verify all dimensions and report any discrepancies to WOLFVR before proceeding with any work. All documents remain the property of WOLFVR. Unauthorized use, modification, and/or reproduction of these documents is prohibited without written permission. The material contained herein reflects the Consultant's best judgment in light of the information available at the time of preparation. Any use which a third party makes of the documents, or any reliance on or decisions to be made based on them are the responsibility of such third parties. The Consultant accepts no responsibility for damages, if any, suffered by any third party as a result of decisions made or actions based on the documents.



Do not scale drawings. Contractors must check and verify all dimensions and report any discrepancies to WOLFVR before proceeding with any work. All documents remain the property of WOLFVR. Unauthorized use, modification, and/or reproduction of these documents is prohibited without written permission. The material contained herein reflects the Consultant's best judgment in light of the information available at the time of preparation. Any use which a third party makes of the documents, or any reliance on or decisions to be made based on them are the responsibility of such third parties. The Consultant accepts no responsibility for damages, if any, suffered by any third party as a result of decisions made or actions based on the documents.



Project No.: SAMPLE
EXISTING CONDITION PLUS



FRONT ELEVATION
SIMEON STREET SAMPLE

1/8"=1'-0"
2023.03.29

Do not scale drawings. Contractors must check and verify all dimensions and report any discrepancies to WOLFVR before proceeding with any work. All documents remain the property of WOLFVR. Unauthorized use, modification, and/or reproduction of these documents is prohibited without written permission. The material contained herein reflects the Consultant's best judgment in light of the information available at the time of preparation. Any use which a third party makes of the documents, or any reliance on or decisions to be made based on them are the responsibility of such third parties. The Consultant accepts no responsibility for damages, if any, suffered by any third party as a result of decisions made or actions based on the documents.



Project No.: SAMPLE
EXISTING CONDITION PLUS



RIGHT ELEVATION
SIMEON STREET SAMPLE

1/8"=1'-0"
2023.03.29

Do not scale drawings. Contractors must check and verify all dimensions and report any discrepancies to WOLFVR before proceeding with any work. All documents remain the property of WOLFVR. Unauthorized use, modification, and/or reproduction of these documents is prohibited without written permission. The material contained herein reflects the Consultant's best judgment in light of the information available at the time of preparation. Any use which a third party makes of the documents, or any reliance on or decisions to be made based on them are the responsibility of such third parties. The Consultant accepts no responsibility for damages, if any, suffered by any third party as a result of decisions made or actions based on the documents.



Project No.: SAMPLE
EXISTING CONDITION PLUS

REAR ELEVATION
SIMEON STREET SAMPLE

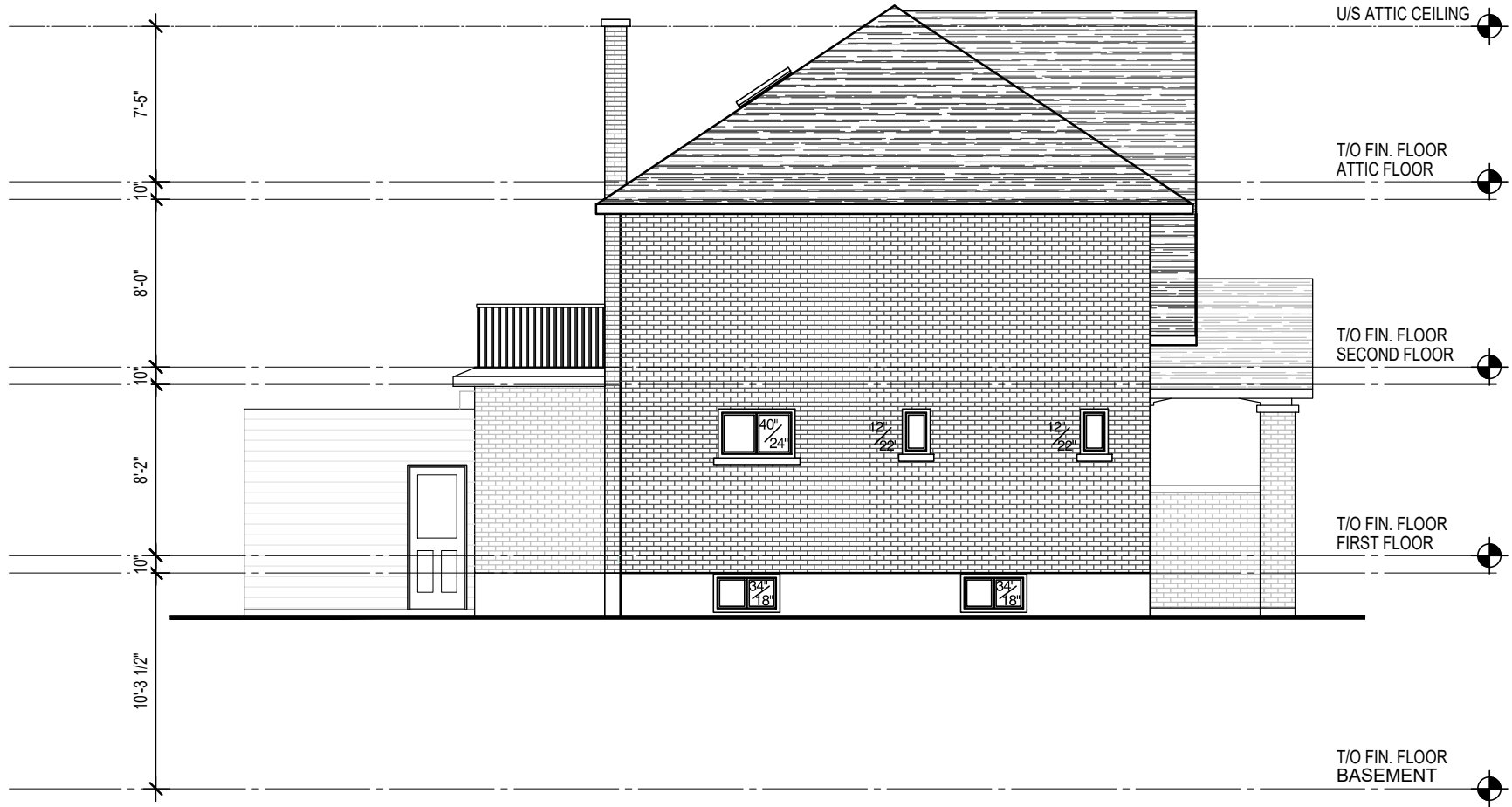
1/8"=1'-0"
2023.03.29



Do not scale drawings. Contractors must check and verify all dimensions and report any discrepancies to WOLFVR before proceeding with any work. All documents remain the property of WOLFVR. Unauthorized use, modification, and/or reproduction of these documents is prohibited without written permission. The material contained herein reflects the Consultant's best judgment in light of the information available at the time of preparation. Any use which a third party makes of the documents, or any reliance on or decisions to be made based on them are the responsibility of such third parties. The Consultant accepts no responsibility for damages, if any, suffered by any third party as a result of decisions made or actions based on the documents.



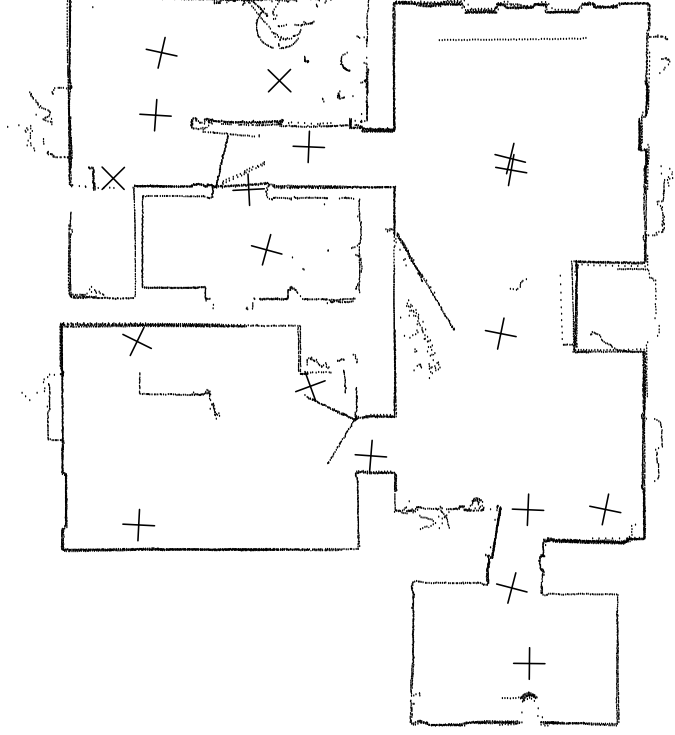
Project No.: SAMPLE
EXISTING CONDITION PLUS



LEFT ELEVATION
SIMEON STREET SAMPLE

1/8"=1'-0"
2023.03.29

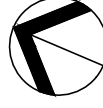
Do not scale drawings. Contractors must check and verify all dimensions and report any discrepancies to WOLFVR before proceeding with any work. All documents remain the property of WOLFVR. Unauthorized use, modification, and/or reproduction of these documents is prohibited without written permission. The material contained herein reflects the Consultant's best judgment in light of the information available at the time of preparation. Any use which a third party makes of the documents, or any reliance on or decisions to be made based on them are the responsibility of such third parties. The Consultant accepts no responsibility for damages, if any, suffered by any third party as a result of decisions made or actions based on the documents.



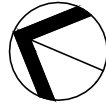
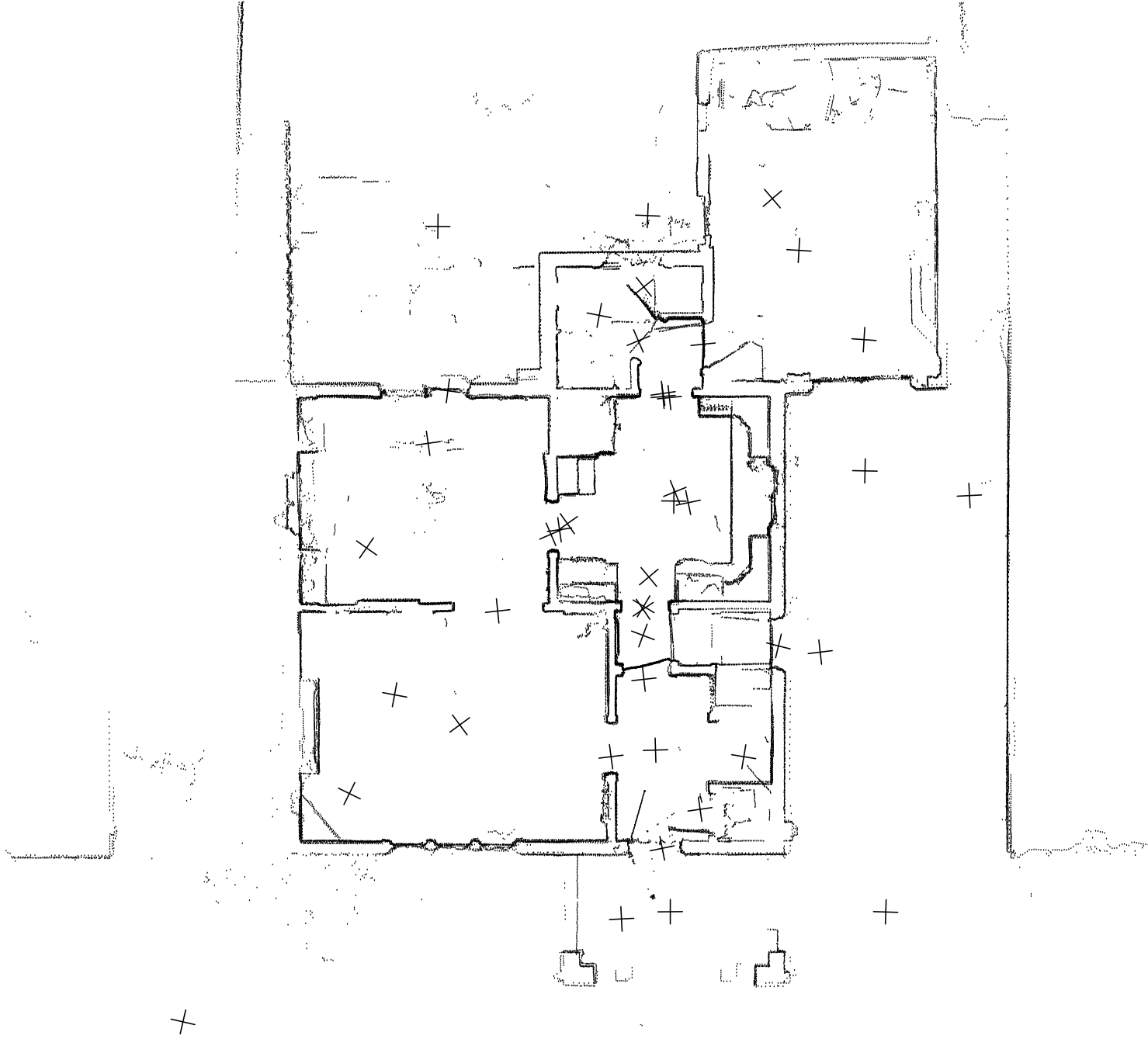
1/8"=1'-0"
2023.03.29

BASEMENT FLOOR PLAN - POINT CLOUD
SIMEON STREET SAMPLE

Project No.: SAMPLE
EXISTING CONDITION



Do not scale drawings. Contractors must check and verify all dimensions and report any discrepancies to WOLFVR before proceeding with any work. All documents remain the property of WOLFVR. Unauthorized use, modification, and/or reproduction of these documents is prohibited without written permission. The material contained herein reflects the Consultant's best judgment in light of the information available at the time of preparation. Any use which a third party makes of the documents, or any reliance on or decisions to be made based on them are the responsibility of such third parties. The Consultant accepts no responsibility for damages, if any, suffered by any third party as a result of decisions made or actions based on the documents.

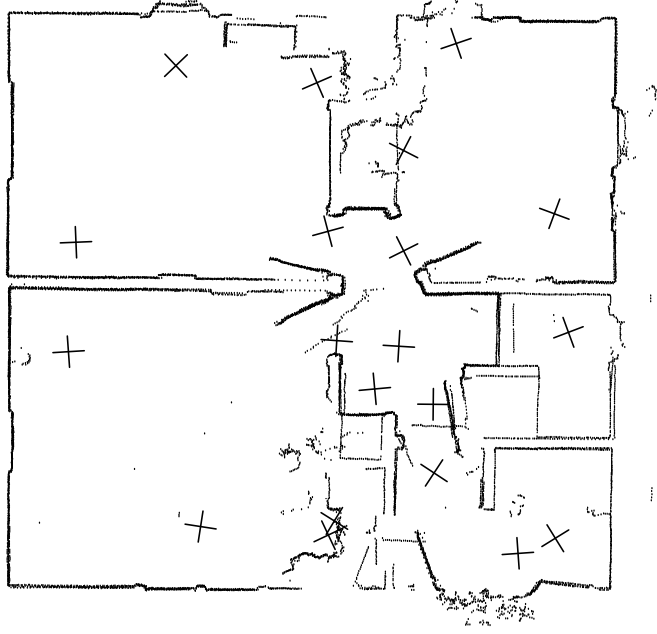


MAIN FLOOR PLAN - POINT CLOUD
SIMEON STREET SAMPLE

1/8"=1'-0"
2023.03.29

Project No.: SAMPLE
EXISTING CONDITION

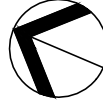
Do not scale drawings. Contractors must check and verify all dimensions and report any discrepancies to WOLFVR before proceeding with any work. All documents remain the property of WOLFVR. Unauthorized use, modification, and/or reproduction of these documents is prohibited without written permission. The material contained herein reflects the Consultant's best judgment in light of the information available at the time of preparation. Any use which a third party makes of the documents, or any reliance on or decisions to be made based on them are the responsibility of such third parties. The Consultant accepts no responsibility for damages, if any, suffered by any third party as a result of decisions made or actions based on the documents.



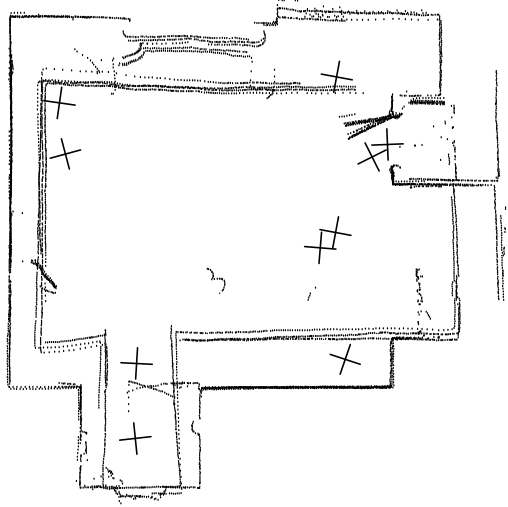
1/8"=1'-0"
2023.03.29

SECOND FLOOR PLAN - POINT CLOUD
SIMEON STREET SAMPLE

Project No.: SAMPLE
EXISTING CONDITION



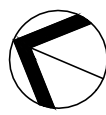
Do not scale drawings. Contractors must check and verify all dimensions and report any discrepancies to WOLFVR before proceeding with any work. All documents remain the property of WOLFVR. Unauthorized use, modification, and/or reproduction of these documents is prohibited without written permission. The material contained herein reflects the Consultant's best judgement in light of the information available at the time of preparation. Any use which a third party makes of the documents, or any reliance on or decisions to be made based on them are the responsibility of such third parties. The Consultant accepts no responsibility for damages, if any, suffered by any third party as a result of decisions made or actions based on the documents.



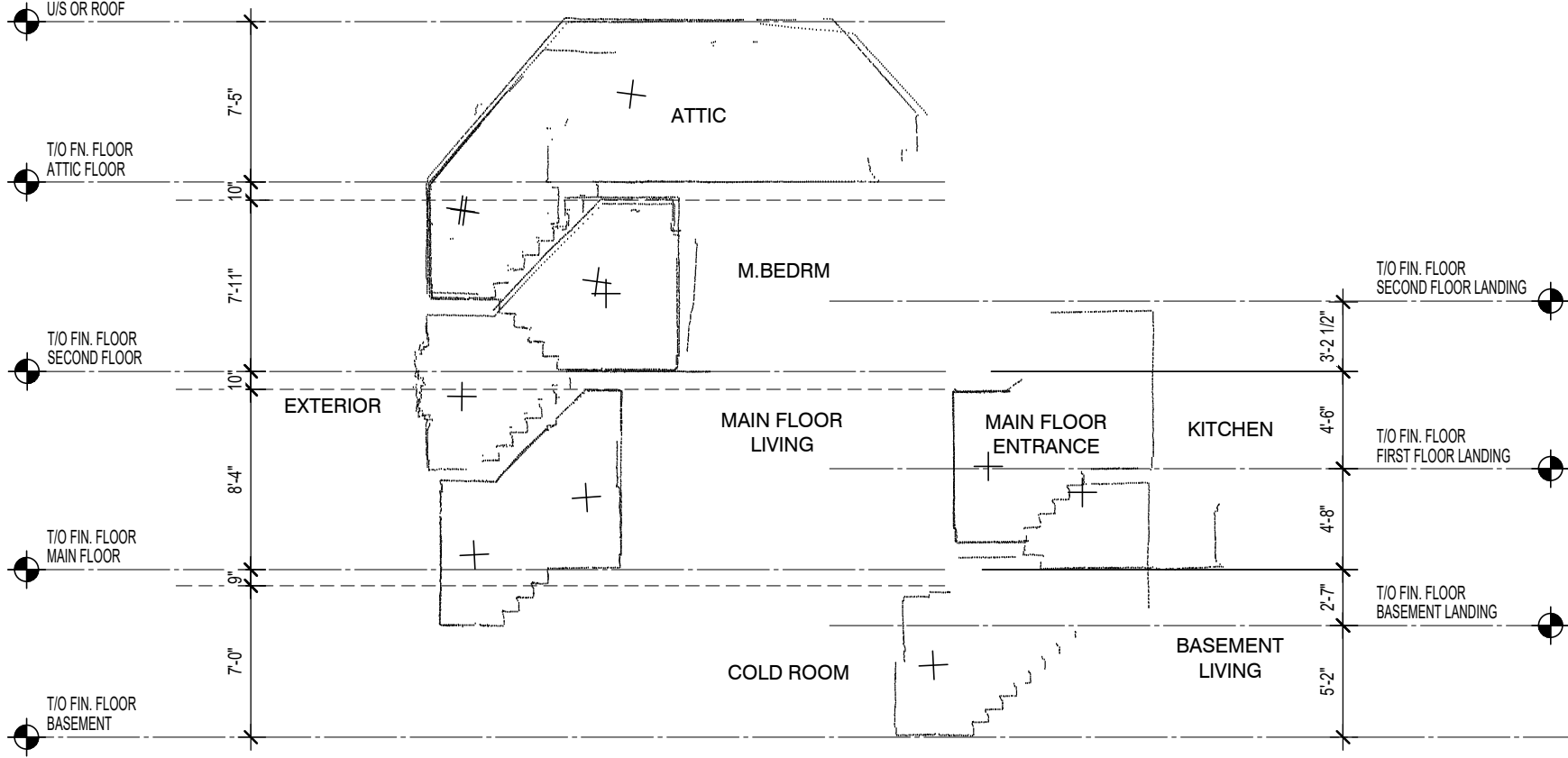
1/8"=1'-0"
2023.03.29

ATTIC FLOOR PLAN - POINT CLOUD
SIMEON STREET SAMPLE

Project No.: SAMPLE
EXISTING CONDITION



Do not scale drawings. Contractors must check and verify all dimensions and report any discrepancies to WOLFVR before proceeding with any work. All documents remain the property of WOLFVR. Unauthorized use, modification, and/or reproduction of these documents is prohibited without written permission. The material contained herein reflects the Consultants' best judgment in light of the information available at the time of preparation. Any use which a third party makes of the documents, or any reliance on or decisions to be made based on them are the responsibility of such third parties. The Consultant accepts no responsibility for damages, if any, suffered by any third party as a result of decisions made or actions based on the documents.



Project No.: SAMPLE
EXISTING CONDITION

SECTION - POINT CLOUD
SIMEON STREET SAMPLE

1/8"=1'-0"
2023.03.29